

LOCATION

Located at the foot of Boston's charming Beacon Hill neighborhood, Wyndham Boston Beacon Hill offers beautiful panoramic views of the Boston skyline and Charles River. Guests will enjoy easy access to nearby Boston/Logan Airport and Massachusetts General Hospital or visiting attractions like the New England Aquarium, Museum of Science and Faneuil Hall Marketplace

FEATURES

- Valet Service (Same Day)
- Coin Laundry
- Seasonal Outdoor Pool (Memorial Day-Labor Day)
- Health/Fitness Center
- Business Center
- The Dean's List Restaurant & Bar Serving Breakfast, Lunch and Dinner
- Room Service
- Valet and Self-Parking (For a Fee)

ROOM DETAILS

- 304 Newly Renovated Guest Rooms
- 2 Executive Level Floors with Private Access and Upgraded Amenities
- 10 Junior Suites with In-Room Microwave and Mini-Fridge
- Complimentary Wi-Fi
- Cable TV with Pay-Per-View Movies
- Work Desk
- Accessible Rooms/Visual Alert for Hearing Impaired
- iHome Clock Radio

MEETING SPACE HIGHLIGHTS

- 5,678 square feet of Meeting/Banquet Space
- 8 Meeting rooms located on the top floor of the hotel
- Floor to ceiling windows with views of the Boston and Cambridge skyline
- Full Service Catering Menus/Custom Menu Options
- Wedding, bridal showers and rehearsal dinner packages
- Meeting/Banquet Specialists on staff



DINING AND ENTERTAINMENT

- The Dean's List Restaurant & Bar Serving Breakfast Lunch and Dinner
- Room Service
- Dining and Nightlife within Walking Distance

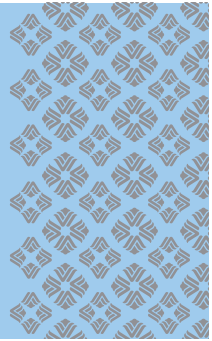
GETTING THERE

From Massachusetts Turnpike (Interstate 90 East)

Take Interstate 90 East to Exit 18 (Brighton Cambridge) and follow signs to Cambridge/Somerville. Turn right onto Storrow Drive East towards Downtown Boston. Take Storrow Drive West to Government Center exit (exit left). At the end of the ramp, yield to crossing traffic at flashing traffic signal, then proceed straight, following signs for Government Center/Massachusetts General Hospital. Continue on Cambridge Street and take second set of lights on to Blossom Street. The hotel is on the right.

From Logan International Airport

Turn left toward Airport Exit. Turn slight left, then slight right toward Boston/Route 1A South/I-93 North. Take the Sumner Tunnel into Boston (Toll road). Take the Government Center ramp toward I-93 North. Keep left to ramp toward Government Center. Straight on to New Chardon Street. Right onto Cambridge Street. Turn right onto Blossom Street, hotel is on the right.



WYNDHAM

Boston Beacon Hill



WYNDHAM

Boston Beacon Hill

Wyndham Boston Beacon Hill
5 Blossom Street
Boston, MA 02114

Phone: 617-742-7630 Fax: 617-742-4192
WYNDHAM.COM or 1-800-WYNDHAM
WYNDHAMBEACONHILL.COM

All Wyndham® hotels are either franchised by the company or managed by Wyndham Hotel Management, Inc., one of its affiliates or through a joint-venture partner. ©2013 Wyndham Hotels and Resorts, LLC. All rights reserved.

MC-1301