



DOLCE CAMPOREAL LISBOA

Dolce CampoReal Lisboa, is nestled in the Torres Vedras district, 30 minutes to the north of Lisbon and 20 minutes from the beaches.

Guest Rooms & Suites

Our elegant and modern accommodation includes 151 hotel rooms and suites, and also apartments, townhouses and villas which can have from 1 to 4 bedrooms. Be amazed by the protected landscape of Socorro and Archeira mountains and enjoy the wonderful views over our 18-hole golf course.

BEDROOMS

- 45 Deluxe
- 88 Superior Deluxe
- 7 Premium
- 2 Suites
- 8 Duplex Suites
- 1 Royal Suite
- Connecting rooms for families
- Rooms and Suites are all non-smoking

ROOM FACILITIES

- Flat screen television
- Work desk
- Wireless internet
- Mini-Bar
- Iron and board
- Large bathrooms with separate rain shower and bath
- Room service

Restaurants and Bars

Dine on Portuguese and international cuisines in casual and sophisticated settings.

- “Manjapão” buffet restaurant
- “Grande Escolha ” à la carte cuisine restaurant
- “Garden Terrace” restaurant and bar
- “Wellington Bar”
- “Eagle Pool Bar” (seasonal)

On-site Activities

Whether you want to relax or stay active, there’s always plenty to do at Dolce CampoReal Lisboa.

- Fitness centre available 24h
- Indoor and 2 outdoor swimming pools
- Tennis courts
- Donald Steel designed Golf Course – 18 holes Par 72
- Mandalay Wellness & Spa – 700 m² and 7 treatment rooms
- Kids Club – Activities for children
- Center “Clube Aventura” – Teambuilding and outdoor activities

Local Activities and team building

- Tour Lisbon wine region and discover the wine production history
- Visit the beaches of Santa Cruz, one of the best European spots for surfing
- Explore the medieval town of Óbidos & its treasures

Meeting & Events

The meeting rooms meet the standards established by the International Association of Conference Centers and offer conveniences including ergonomic chairs, tables with plug in system, top notch audiovisual equipments and wi-fi internet.





Capacity chart

- 2150 m² (23 142 sq ft) of indoor meeting and banqueting area
- 23 flexible meeting rooms
- Plenary room of 489 m² (5263 sq ft) for up to 500 persons

Meeting Rooms	Area		Height		Dimensions				Theatre	Classroom	U Shape	Conference or Boardroom	Cabaret 6/per table	Reception/ Cocktail	Banqueting	
	m ²	sq ft	m	ft	length-m	length-ft	width-m	width-ft							Buffet 12 pax	Set Menu 12 pax
Main Building																
CampoReal	489	5263	3,85	12,628	25,06	82	19,51	64	480	180	64	84	126	530	300	360
CampoReal 1	242	2606	3,85	12,628	19,51	41	12,41	64	240	84	44	60	72	250	144	180
CampoReal 2	83	893	3,85	12,628	12,26	40	6,77	22	77	30	20	28	24	100	48	72
CampoReal 3	71	764	3,85	12,628	12,26	40	5,79	19	72	20	20	28	24	85	36	60
CampoReal 4	83	891	3,85	12,628	12,26	40	6,75	22	77	30	20	28	24	100	48	72
CampoReal 2+3	154	1658	3,85	12,628	12,56	40	12,26	41	160	60	28	44	48	160	84	132
CampoReal 3+4	154	1655	3,85	12,628	12,54	40	12,26	41	160	60	28	44	48	160	84	132
CampoReal 2+3+4	239	2575	3,85	12,628	19,51	40	12,26	64	240	84	44	60	72	250	144	180
Alentejo	123	1320	3,20	10,496	11,32	37	10,83	36	112	40	24	36	36	140	72	108
Vina	78	837	3,20	10,496	9,59	31	8,11	27	70	24	20	20	30	100	48	50
Lusitano	30	328	3,20	10,496	6,32	21	4,82	16	24	8	6	8	6	25	12	12
6 duplex Duo Meeting Rooms	18	189	2,40	7,872	4	13	4,4	14	n.a.	n.a.	n.a.	10	6			
7 Pateo Meeting Rooms	20	215	2,40	7,872	4	13	5	16	n.a.	n.a.	n.a.	10	6			
Library	74	795	n.a.	n.a.	11,37	37,29	6,50	21,32	70	24	20	20	24	90	48	60
Oeste	56	714	3,00	10,00	10,20	33,46	6,90	22,63	50	24	20	20	24	80	24	48
Grande Escolha	95	1023	3,15	10,33	12,34	40,48	7,71	25,29	60	18	16	20	24	100	72	72
Banqueting - Cocktail																
Pateo	275	2960			20,63	68	13,34	44						280		
Sunset Terrace	650	6997			43,93	144	14,81	49						600		
Wine Cellar Main Room	23	251			8,2	27	2,84	9						15		10
Wine Cellar Small Room	12	127			4,2	14	2,82	9						5		4
Total banqueting and meeting space	2150															
Restaurants																
Manjapão	372	4004	3,15	10,332	30,53	100	12,18	40						180		180
Grande Escolha	95	1023	3,15	10,332	12,34	40	7,71	25						72		72
Garden Terrace	107	1152	2,56	8,3968	14,35	47	7,46	24						50		50

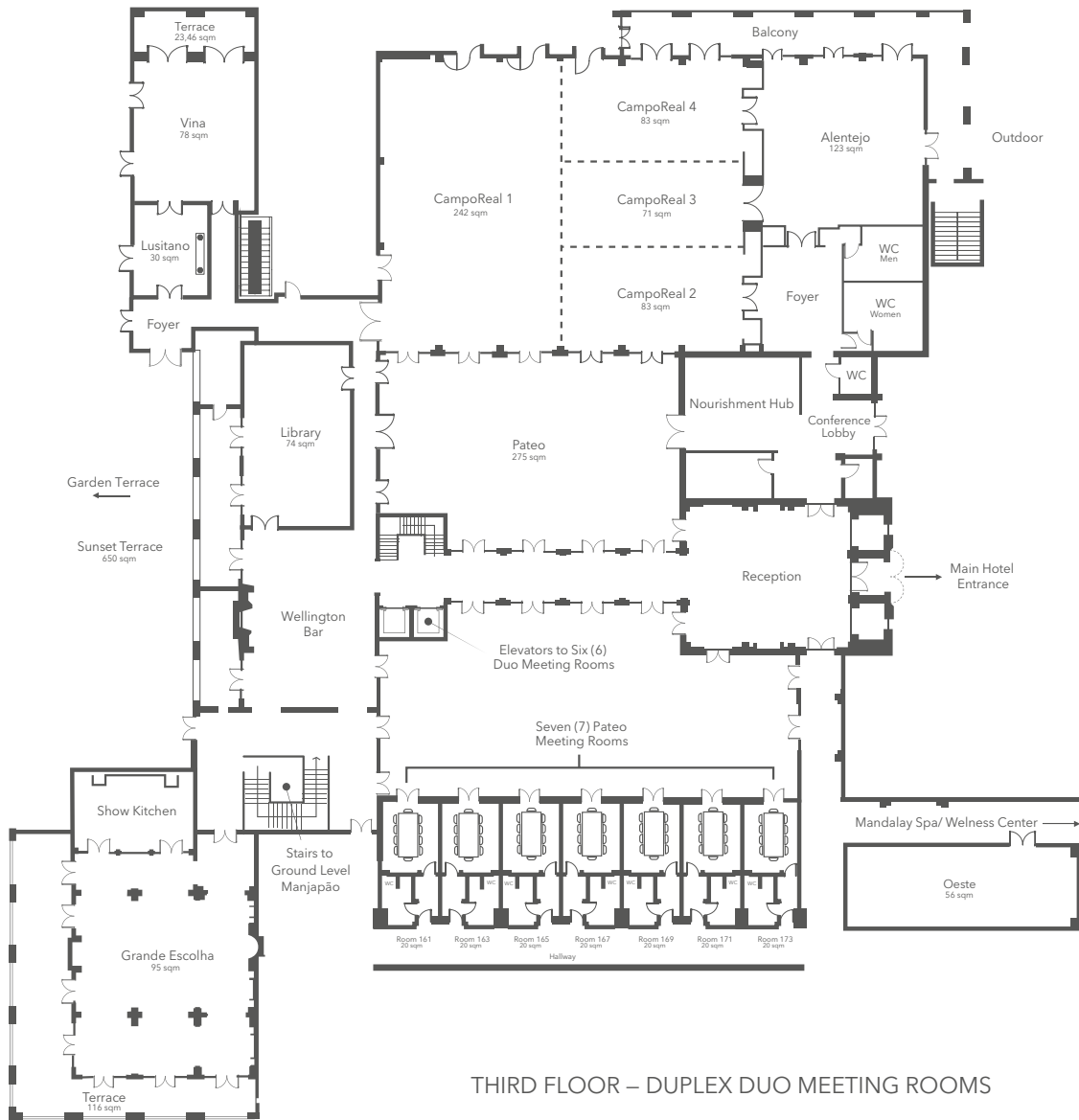
Capacity measures with ergonomic seating. For theater style and banqueting seating, banqueting chairs are used.



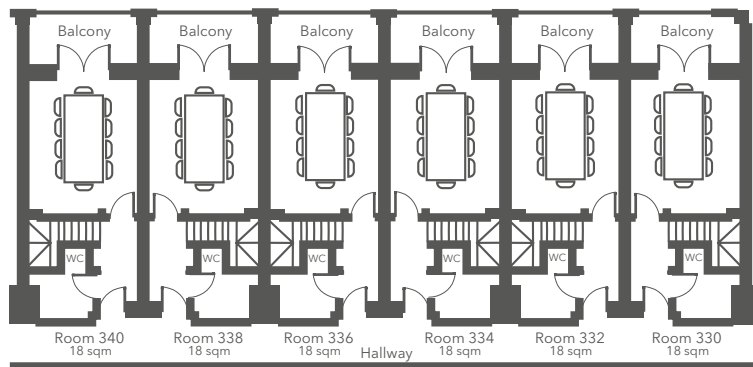


Floor Plans

FIRST FLOOR



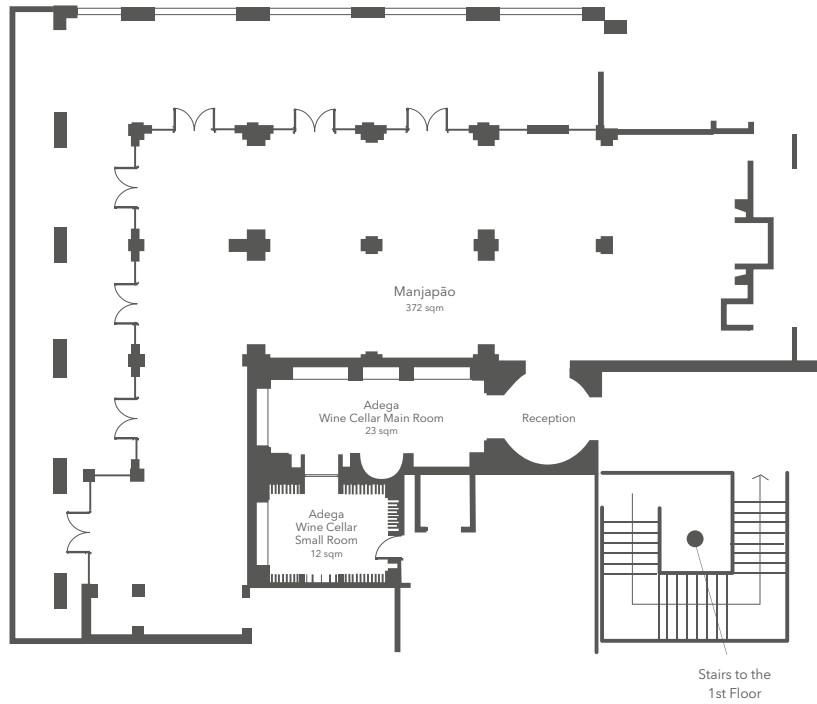
THIRD FLOOR – DUPLEX DUO MEETING ROOMS





Floor Plans

GROUND FLOOR



Map of the area

